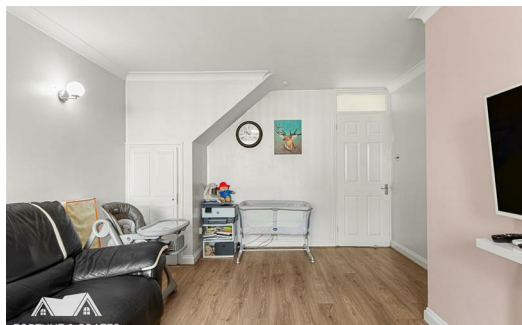




**FORTUNE & COATES**

The People's Estate Agent

<https://www.fortuneandcoates.co.uk>



**55 Longfield, Harlow, CM18 6LA**

**Offers over £325,000**

Fortune and Coates are delighted to offer to the market this two bedroom family home situated in Longfield, Harlow.

Upon entering, you are greeted by an inviting entrance hallway that leads to a spacious open-plan lounge and dining area. The large window in this room allows natural light to flood in, creating a warm and welcoming atmosphere, ideal for both relaxation and entertaining.

The kitchen is fully tiled and well-equipped, featuring a combination of wall and base units, an integrated oven and hob, and plumbing for a dishwasher, all complemented by a tiled backsplash. Additionally, the ground floor boasts a convenient utility room with plumbing for a washing machine, enhancing the functionality of the home.

Lounge 11'6" x 18'4" (3.52 x 5.59)

Kitchen 6'9" x 11'8" (2.07 x 3.58)

Utility 7'1" x 7'6" (2.17 x 2.31)

Bedroom 11'0" x 13'5" (3.37 x 4.11)

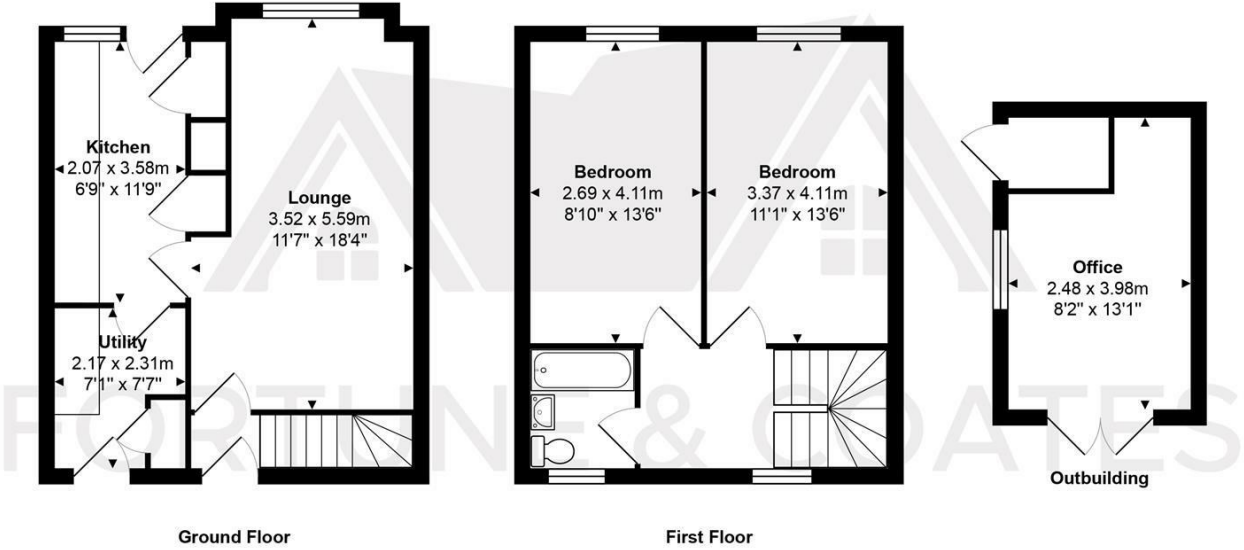
Bedroom 8'9" x 13'5" (2.69 x 4.11)

Office 8'1" x 13'0" (2.48 x 3.98)

AGENT NOTE: The information provided about this property does not constitute or form part of an offer or contract, nor may it be regarded as representations. All interested parties must verify accuracy and your solicitor must verify tenure/lease information, fixtures & fittings and, where the property has been extended/converted, planning/building regulation consents. All dimensions are approximate and quoted for guidance only as are floor plans which are not to scale, and their accuracy cannot be confirmed. Reference to appliances and/or services does not imply that they are necessarily in working order or fit for the purpose.



Floor Plan



Ground Floor

First Floor

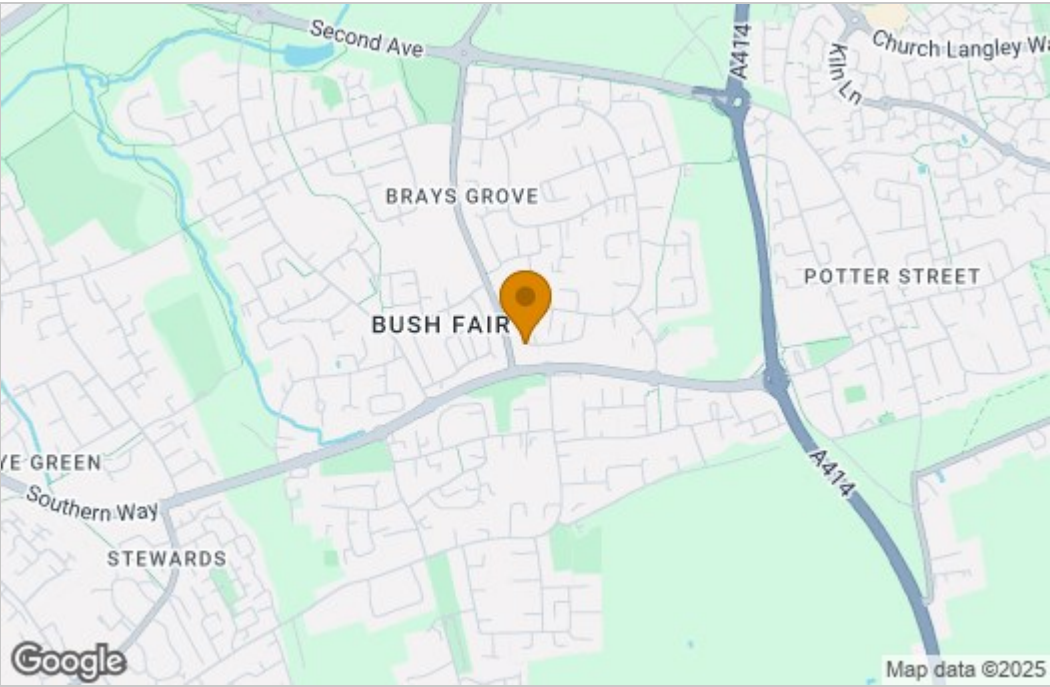
Outbuilding

Total Area: approx. 75.0 m² ... 808 ft²

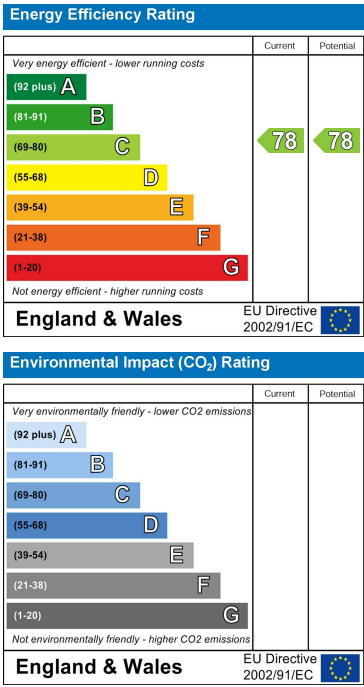
THE FLOORPLAN IS FOR ILLUSTRATIVE PURPOSES ONLY AND IS NOT TO SCALE.  
Measurements and features are approximate and may differ from the actual property. Verify all details independently; no liability is accepted for errors or omissions.

Property marketing provided by [www.fotomarketing.co.uk](http://www.fotomarketing.co.uk)

Area Map



Energy Efficiency Graph



These particulars, whilst believed to be accurate are set out as a general outline only for guidance and do not constitute any part of an offer or contract. Intending purchasers should not rely on them as statements of representation of fact, but must satisfy themselves by inspection or otherwise as to their accuracy. No person in this firm's employment has the authority to make or give any representation or warranty in respect of the property.